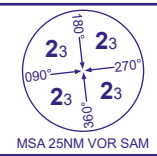


INSTRUMENT APPROACH CHART - ICAO

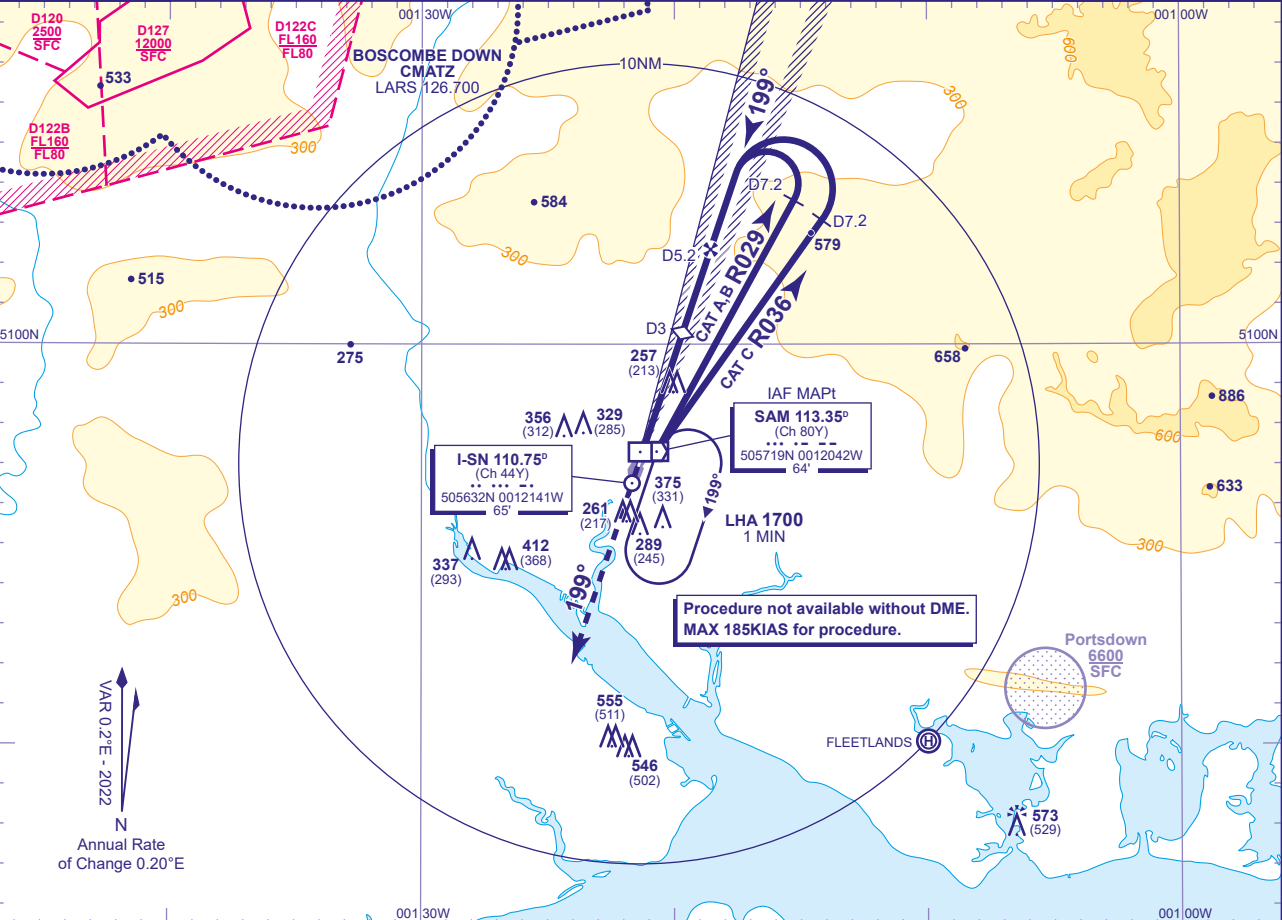
SOUTHAMPTON
(IAF VOR SAM)
LOC/DME
RWY 20
(ACFT CAT A,B,C)



APP	120.230	SOLENT RADAR
	122.730	SOUTHAMPTON RADAR
TWR	118.205	SOUTHAMPTON TOWER
ATIS	130.880	SOUTHAMPTON INFORMATION

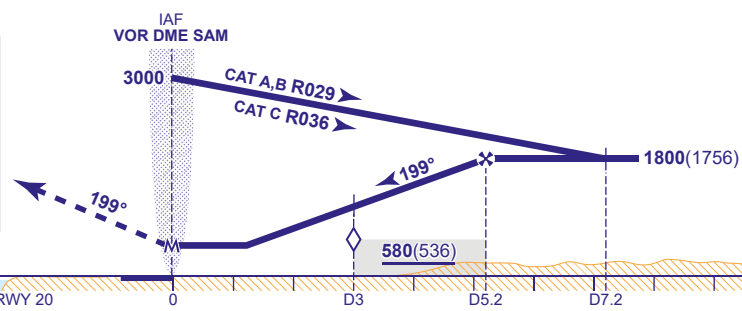
AD ELEVATION	44
THR ELEVATION	44
OBSTACLE ELEVATION	648 AMSL (604) (ABOVE THR)
BEARINGS ARE MAGNETIC	

TRANSITION ALTITUDE	6000 (see note 6)
---------------------	-------------------



RECOMMENDED PROFILE Gradient 5.4%, 330FT/NM			
DME I-SN	5	4	3 (SDF)
ALT(HGT)	1740(1696)	1410(1366)	1080(1036)
			750(706)

MAPt VOR SAM
Continuous climb to 3000, initially straight ahead then as directed.
RCF: Continuous climb to 3000. Initially straight ahead to 2000 or I-SN DME 7.7 (SAM DME 8) whichever is later then climbing right turn to VOR SAM to hold at 3000.



Aircraft Category		A	B	C	Rate of descent	G/S KT	160	140	120	100	80
OCA (OCH)	Procedure	510(466)	510(466)	510(466)		FT/MIN	880	770	660	550	440
VM(C)OCA (OCH AAL)	Total Area	680(636)	700(656)	890(846)							

- NOTE**
- Lowest altitude to commence procedure from hold is 2000.
 - DME SAM is situated 0.3NM east of THR RWY 20.
 - DME SAM may be substituted for DME I-SN if required. There are no changes to DME distances when DME SAM is used.
 - Due to controlled airspace constraints, aircraft may temporarily leave controlled airspace in the base turn. Aircraft being radar vectored to the LOC may not be provided a period of level flight immediately prior to crossing the FAF.
 - Aircraft will normally be required to hold not lower than 2000.
 - Outside the Solent CTA notified hours of operation the Transition Altitude is 3000.

CHANGE (12/24): VOR SAM RECALIBRATED. RADIALS/TRACKS REVISED.